



nectre.

N60

INSTALLATION INSTRUCTIONS

EFFICIENT • WARM • FRIENDLY



NECTRE N60 CURVED SIDES



NECTRE N60 NAKED SIDES



Glen Dimplex Australia proudly supports the activities of Landcare Australia through its membership of the AHHA.

TABLE OF CONTENTS

1. Important Information.....	2
2. Installing the Heater.....	2
2.1. Fitting Top Plate.....	2
2.2. Positioning the Heater.....	3
2.2.1. N60 Curved Standard Installation.....	3
2.2.2. N60 Curved Corner Installation.....	3
2.2.3. N60 Naked Standard Installation.....	4
2.2.4. N60 Naked Corner Installation.....	4
2.3. Floor Protector (Hearth).....	5
3. Reducing Clearances to Combustibles.....	5
4. Installing the Flue.....	6
4.1. Fitting Flue Seal.....	6
5. Installing the Baffle Plates.....	7
6. Installing the Fire Bricks.....	7
7. Installing the Ash Pan.....	8
8. Installing the Base Cabinet Glass Insert.....	8
9. Technical Drawings.....	9
9.1. N60 Curved Sides.....	9
9.2. N60 Naked Sides.....	10

THE INSTALLATION INSTRUCTIONS IN THIS MANUAL APPLY TO THE NECTRE N60.

IT HAS BEEN TESTED FOR EMISSIONS AND EFFICIENCY AND COMPLIES ACCORDING TO AS/NZS 4012:2014 & AS/NZS 4013:2014.

IT HAS ALSO BEEN TESTED FOR SAFETY INSTALLATION CLEARANCES IN ACCORDANCE WITH AS/NZS 2918:2018

1. IMPORTANT INFORMATION

Most building regulatory Authorities in Australia require any wood heater installation to comply with Installation Standard AS/NZS 2918:2018. Different states and councils may have varying regulations. Check local building regulations before installing the appliance.

All Nectre wood heaters have been tested to ensure that they will meet the appropriate safety Standard requirements if the instructions in this manual are followed. As the safety and emissions performance can be affected by altering the appliance, no modifications are allowed without written permission from the manufacturer.

WE RECOMMEND THAT THE INSTALLATION OF YOUR NECTRE WOOD HEATER BE CARRIED OUT BY A QUALIFIED INSTALLER.

WARNING: THE APPLIANCE AND FLUE SYSTEM SHALL BE INSTALLED IN ACCORDANCE WITH AS/NZS 2918:2018 AND THE APPROPRIATE REQUIREMENTS OF THE RELEVANT BUILDING CODE OR CODES.

WARNING: APPLIANCES INSTALLED IN ACCORDANCE WITH THIS STANDARD SHALL COMPLY WITH THE REQUIREMENTS OF AS/NZS 4012 & AS/NZS 4013 WHERE REQUIRED BY THE REGULATORY AUTHORITY, I.E. THE APPLIANCE SHALL BE IDENTIFIABLE BY A COMPLIANCE PLATE WITH THE MARKING 'TESTED TO AS/NZS 4012 & AS/NZS 4013'.

ANY MODIFICATION OF THE APPLIANCE THAT HAS NOT BEEN APPROVED IN WRITING BY THE TESTING AUTHORITY IS CONSIDERED TO BE IN BREACH OF THE APPROVAL GRANTED FOR COMPLIANCE WITH AS/NZS 4012 & AS/NZS 4013.

CAUTION: MIXING OF APPLIANCE OR FLUE-SYSTEM COMPONENTS FROM DIFFERENT SOURCES OR MODIFYING THE DIMENSIONAL SPECIFICATION OF COMPONENTS MAY RESULT IN HAZARDOUS CONDITIONS. WHERE SUCH ACTION IS CONSIDERED, THE MANUFACTURER SHOULD BE CONSULTED IN THE FIRST INSTANCE.

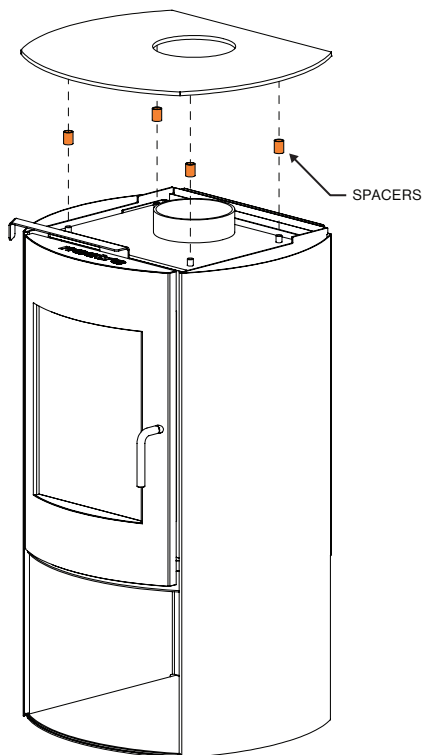
CAUTION: CRACKED AND BROKEN COMPONENTS, EG. GLASS PANELS OR CERAMIC TILES, MAY RENDER THE INSTALLATION UNSAFE.

2. INSTALLING THE HEATER

2.1. FITTING TOP PLATE

The steel top plate and glass base insert for your Nectre N60 will arrive packaged in a cardboard box attached to the rear of the heater. The stainless steel spacers can be found in the parts box in the base of the heater.

1. Place a firebox top spacer (25mm long x 19mm diameter) over each of the vertical 12mm diameter rods on top of the firebox body.
2. Remove the 8mm thick top plate from the box and place on top of the heater locating the hole in the plate over the flue spigot. Adjust the position of the top plate so that there is an even space between the top plate and the flue spigot.



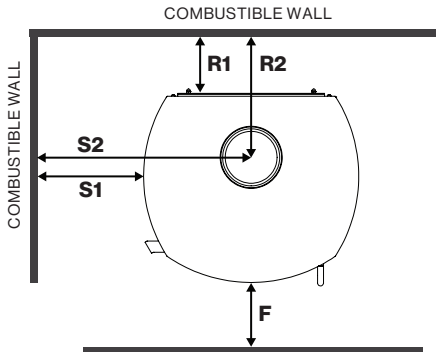
2.2. POSITIONING THE HEATER

First review the necessary clearances specified below before considering where to position the heater.

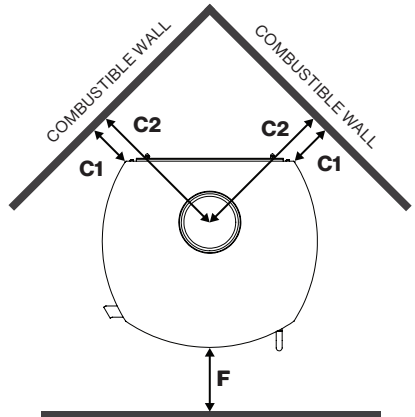
The heater can be installed with a choice of three different flue configurations. Clearances specific to each are listed in the associated tables. Also check the practicability of installing the flue system in relation to any obstructing roof beams before positioning the heater.

These clearance distances can only be reduced if the surrounding walls are made of non-combustible material, eg. Stone, brick, or concrete. If non-combustible material, distance can be reduced to 100 mm. Alternatively, shielding of the wall(s) can reduce clearances (refer to next section for more detail).

2.2.1. N60 CURVED STANDARD INSTALLATION



2.2.2. N60 CURVED CORNER INSTALLATION



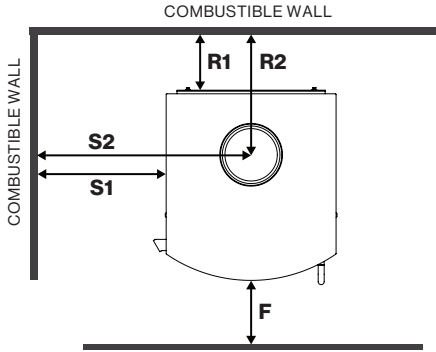
N60 CURVED
STANDARD INSTALLATION

	Single rear flue shield	Decromesh + inner shield OR Solid outer + inner shield
Side - S1	190mm	150mm
Side - S2	480mm	440mm
Rear - R1	100mm	150mm
Rear - R2	273mm	323mm
Floor - F	250mm	250mm

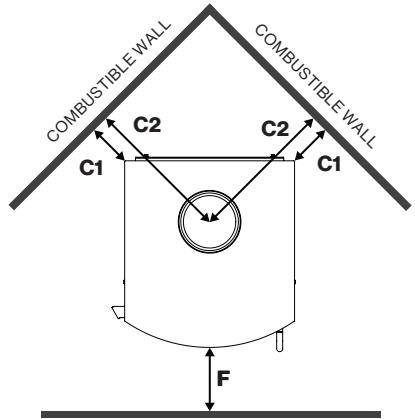
N60 CURVED
CORNER INSTALLATION

	Single rear flue shield OR Decromesh + inner shield OR Solid outer + inner shield
Corner - C1	125mm
Corner - C2	402mm
Floor - F	250mm

2.2.3. N60 NAKED STANDARD INSTALLATION



2.2.4. N60 NAKED CORNER INSTALLATION



N60 NAKED
STANDARD INSTALLATION

	Single rear flue shield	Decromesh + inner shield OR Solid outer + inner shield
Side - S1	450mm	450mm
Side - S2	677mm	677mm
Rear - R1	75mm	125mm
Rear - R2	248mm	298mm
Floor - F	250mm	250mm

N60 NAKED
CORNER INSTALLATION

	Single rear flue shield OR Decromesh + inner shield OR Solid outer + inner shield
Corner - C1	225mm
Corner - C2	500mm
Floor - F	250mm

2.3. FLOOR PROTECTOR (HEARTH)

Unless the heater will be standing on a heat resistant floor such as concrete slab with slate or tiles, it will be necessary to provide a floor protector (hearth).

The dimensions given on the previous pages (“2.2. Positioning the Heater”) are the minimum required for the floor protector to extend beyond the heater. It must extend no less than 300 mm in front of the door opening (250mm from the curved front edge of the heater), no less than 200mm both sides of the door opening, and extend under the heater.

MEASUREMENT	WIDTH
Door opening width	320mm
Minimum floor protector width	720mm

Minimum dimensions for floor protector are 720mm wide by 740mm deep.

It may be desirable, e.g. for aesthetic reasons, for the floor protector to be larger than these minimum dimensions.

The floor protector shall be constructed from non-combustible material no less than 7.5mm thick and with a thermal conductivity not greater than 0.33W/m °K, eg. compressed-fibre cement sheet.

The floor protector may be laid directly on the combustible floor.

For more details and variations on floor protectors refer to AS/NZS 2918 Clause 2.2, 3.3.1, & 3.3.2

3. REDUCING CLEARANCES TO COMBUSTIBLES

If it is necessary to install a heater closer to a combustible surface than the stated requirements in Section 2 of this Installation Guide, it must be done in accordance with Australian Standard AS/NZS 2918 Section 3, Tables 3.1 & 3.2.

Shield Construction: The shield shall be constructed from a heat resistant material. The shield must be fixed to the surface that requires protection and NOT the heater.

The Standard allows three options to reduce stated clearances.

Single layer of continuous material with Minimum Air Gap of 12mm—Clearance Factor = 0.40

Single layer of continuous material with Minimum Air Gap of 25mm—Clearance Factor = 0.30

Two spaced layers of continuous material with Minimum Air Gaps of 12mm + 12mm—Clearance Factor = 0.20

The shielding must be open at the top and bottom (vented) to allow a continuous air flow. It is this air flow that keeps the surface requiring protection cool. Fixings should not impede this air flow.

The shielding needs to go far enough along and up the wall so that the original side and rear required clearances are not compromised. As the flue is now closer to the wall the shielding should also protect the wall from the flue pipe.

For example:

Side wall clearance for the N60 Naked is 450mm.

A 12mm gapped shield on the wall with a factor of 0.40.

Calculate: 450mm x 0.40 = 180mm. This is the new side wall minimum clearance.

The shielding needs to be large enough so that none of the original clearances of 450mm are compromised.

4. INSTALLING THE FLUE

The flue system used when installing the heater **MUST** comply with the current installation standard AS/NZS 2918.

Full instructions on the installation of the flue will be supplied with the flue kit. These **MUST** be adhered to, including the minimum exit height from the top of the floor protector being not less than 4.6m, and the minimum exit height above the roof line of roof ridge as detailed in the instructions.

The N60 uses a 6"/150mm active flue and must be fitted with one of the following:

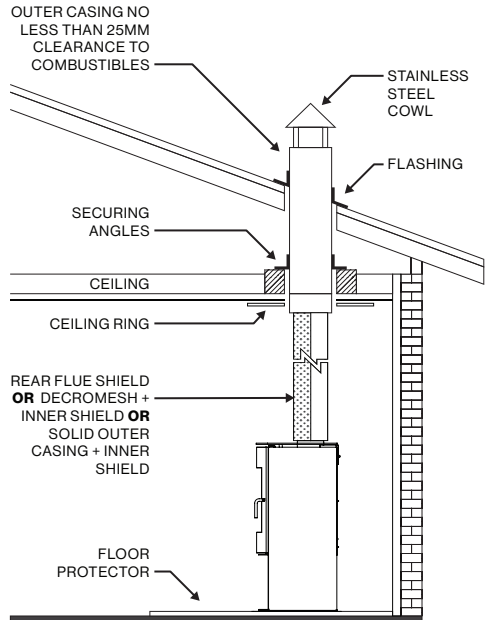
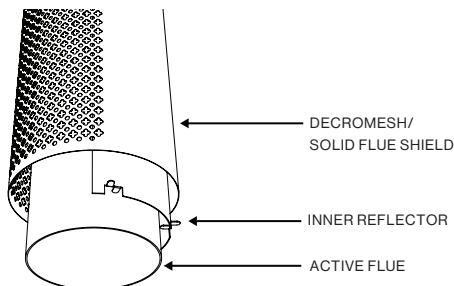
1. Rear Flue Shield:

- a. 900 mm long, minimum 160° arc, stainless steel unpainted rear flue shield with 25mm gap between it and the active flue.

2. Decromesh / Solid Flue Shield:

Note - must be installed with with an internal **heat shield/reflector**.

- a. A full length, half radius perforated decromesh flue shield extending from the heater through into the drop box penetrating the ceiling with the perforated surface facing the front, OR equivalent in solid outer flue shield casing (7.75" diameter)
- b. The first length of casing must have an inner shield extending the full length and positioned so that the inner shield is between the active flue and the rear wall.



If the draft is insufficient or periodic down drafting occurs and the heater smokes or only burns slowly, extending the flue or fitting a specialised cowl will usually resolve the issue.

4.1. FITTING FLUE SEAL

Any gaps between the inside of the flue spigot and the active flue should be sealed. This can be done by wrapping the bottom of the flue with a length of fibreglass tape. Alternatively, high temperature stove cement can also be used.

5. INSTALLING THE BAFFLE PLATES

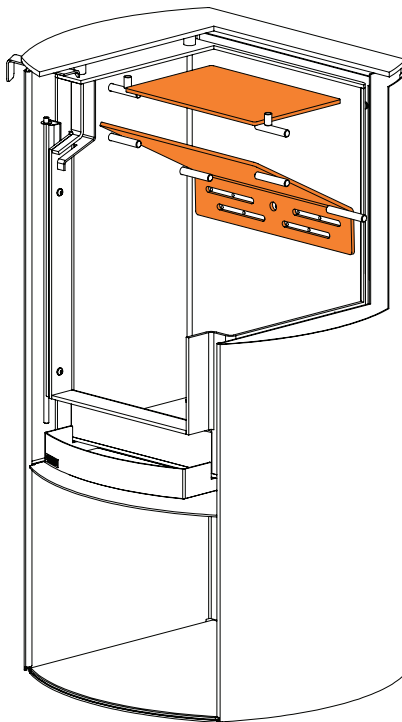
Baffle plates should be installed before installing fire bricks. The Nectre N60 is supplied with two baffle plates:

Upper baffle plate – 300(w) x 200(d) x 6(h) mm.

1. Fit the upper baffle plate first.
2. Hold the baffle plate vertically at the rear of the firebox. Raise it up and over the upper front lugs.
3. Slide it forward enough to clear the upper rear support lug, then slide it back so that the rear of the baffle plate is touching the rear of the firebox.
4. Centralise the baffle so that the gaps between each side and the firebox are equal.

Lower baffle plate – 360(w) x 260(d) x 6(h) mm

1. Hold the baffle plate vertically at the rear of the firebox with the slotted end at the bottom.
2. Raise it up and over the lower front support lugs.
3. Bring the front edge of the baffle plate as high and as far forward as possible, enough for the bottom rear edge to clear the lower rear support lugs.
4. With baffle plate now resting on all four lower support lugs and pushed all the way back, the slots in the rear of the baffle plate should now line up with the air holes at the rear of the firebox.

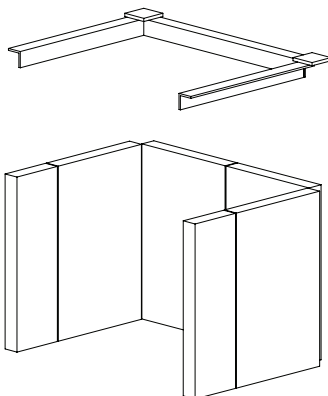


6. INSTALLING THE FIRE BRICKS

The Nectre N60 comes with 4 full size bricks (270(h) x 175(w) x 25(d)mm) and 2 half size bricks (270(h) x 85(w) x 25(d)mm).

Place the brick retainer into the firebox. Raise the retainer and start standing the bricks up against the rear and sides of the firebox as shown in the following diagram.

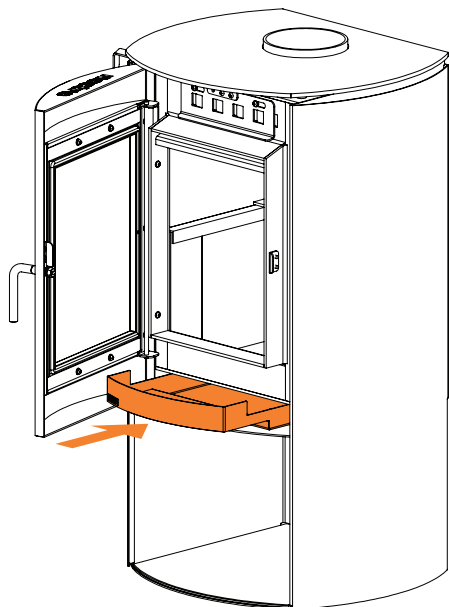
Once bricks are in, fit the retainer over the top to hold them in place.



7. INSTALLING THE ASH PAN

The N60 is supplied with an ash pan - this will be packaged in the parts box in the base of the heater.

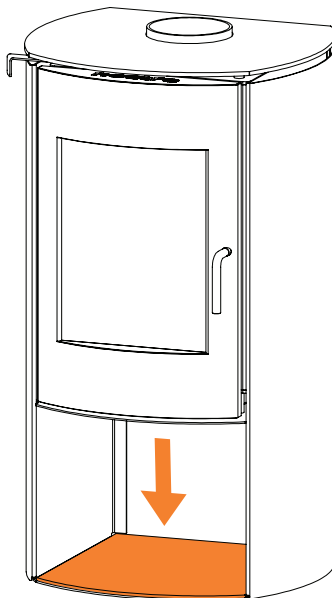
The ash pan will sit in the space between the firebox and the base cabinet - slide it into place between the stainless steel spacers, pushing it all the way back so that the door can be closed.



8. INSTALLING THE BASE CABINET GLASS INSERT

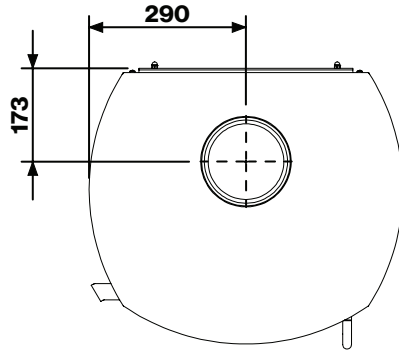
The N60 is supplied with a glass insert which sits in the base cabinet. This will be packaged with the heater top plate, in a cardboard box attached to the rear of the heater.

When the heater has been fully installed, carefully place the glass insert in place, lining up the curved front edge with the curved front edge of the base cabinet.

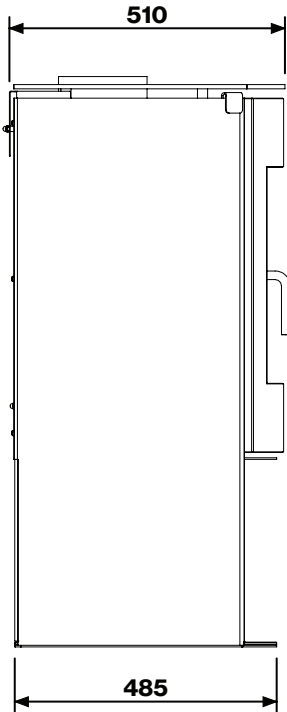


9. TECHNICAL DRAWINGS

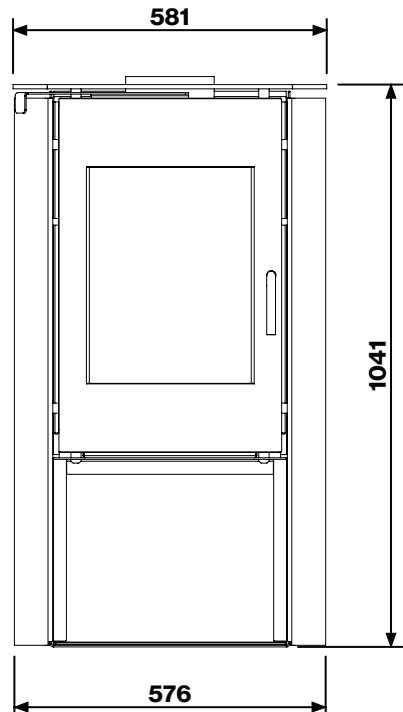
9.1. N60 CURVED SIDES



TOP

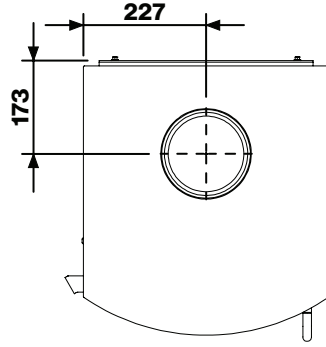


LEFT

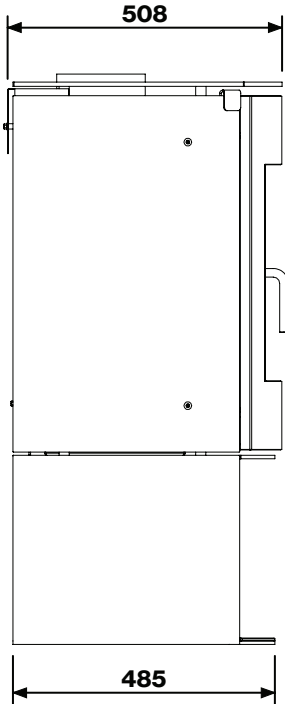


FRONT

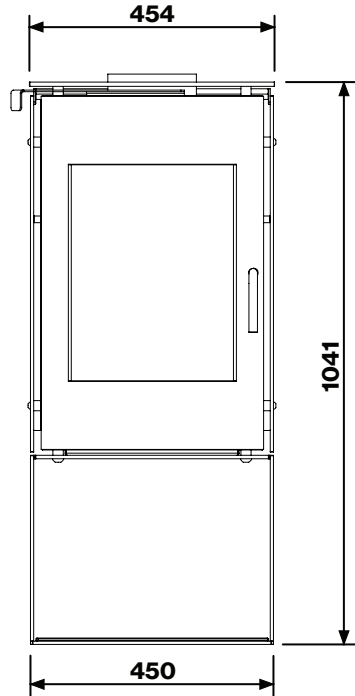
9.2. N60 NAKED SIDES



TOP



LEFT



FRONT



Glen Dimplex Australia Pty Ltd

8 Lakeview Drive,
Scoresby Victoria 3179
Australia

T: 1300 554 155

General & Sales Enquiries: flame.care@glendimplex.com.au

Technical Service: flame.support@glendimplex.com.au

www.glendimplex.com.au